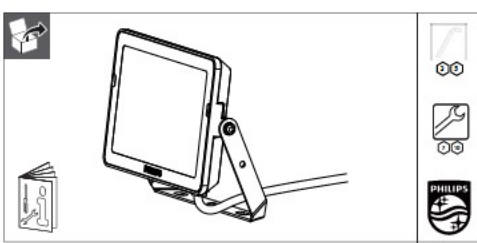


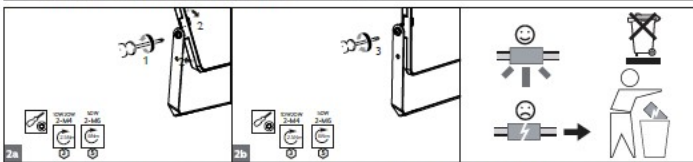
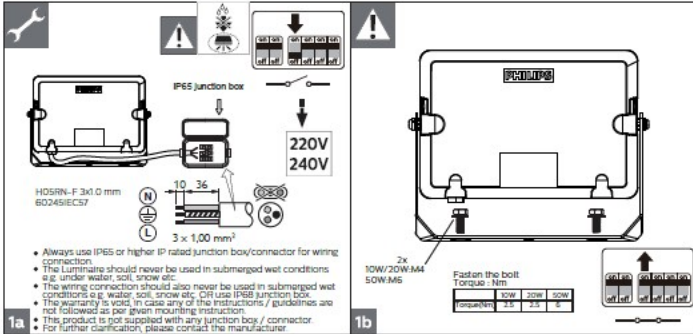
PHILIPS

Decoflood

Decoflood floodlight



	Flux (lm)	Power (W)	Beam	m ²	kg
Decoflood floodlight black 1x10W G2	900	10		0.003	0.3
Decoflood floodlight black 1x20W G2	1800	20	100°x120°	0.006	0.38
Decoflood floodlight black 1x50W G2	4500	50		0.018	0.72



- Luminaire must not be used or stored in corrosive environment where hazardous materials such as sulphur, chlorine, phthalates, etc. are present.