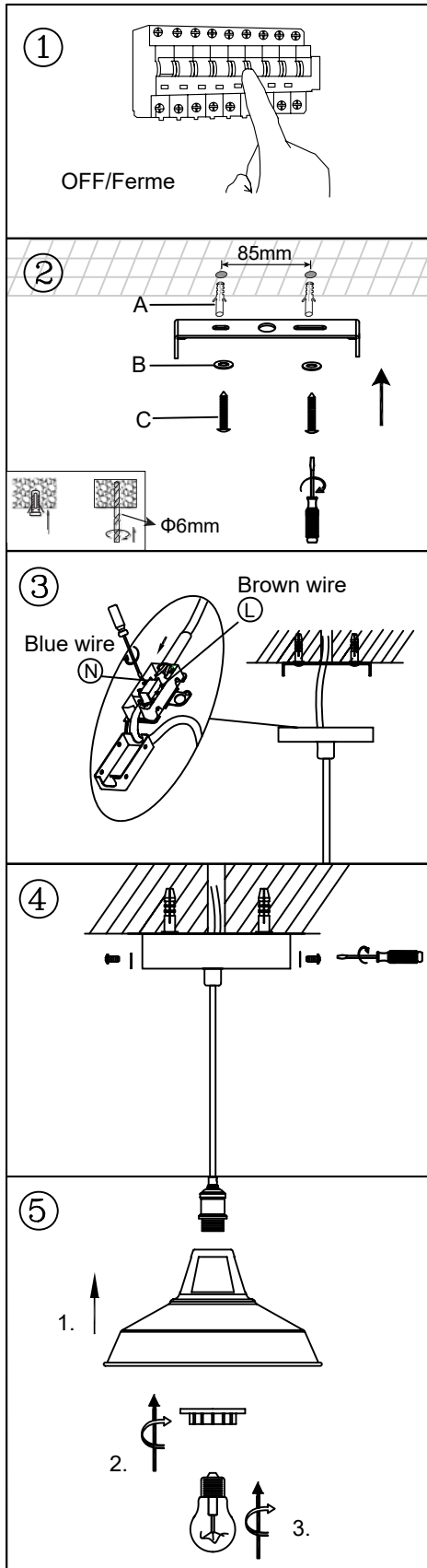
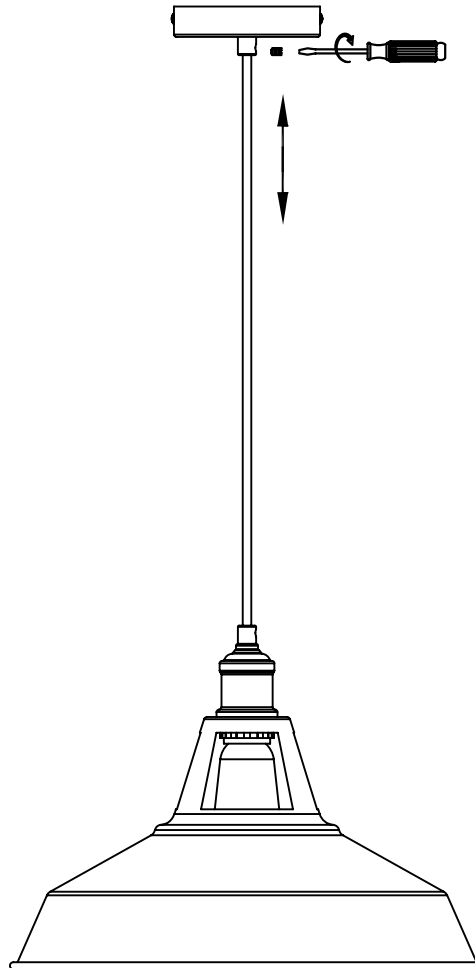





# User Manual



Power connections only allowed to handle from skilled worker



If the external flexible cable or cord of this luminaire is damaged, it shall be exclusively replaced by the manufacturer or his service agent or a similar qualified person in order to avoid a hazard.

| No.  | A   | B   | C   |
|------|---|---|---|
| Type |  |  |  |
| Q'ty | 2   | 2   | 2   |