



WEVER & DUCRÉ
LIGHTING

PLANO

IP44 1.0 PAR16

118420B0

Project

Type

Notes

Quantity

Date

GENERAL

Ceiling

Recessed

Black Matt

RAL 9011^a

Front IP44

Back IP20

Interior

370^b to 390^c lm

LED

Lamp PAR16

PAR16

Socket GU10

max. 12.0 W

CRI ≥ 90

OPTICAL

Flood

Beam angle 35°

ELECTRICAL

100 - 240 V

Total connected power 6.5 W

Class 2

Safety distance 0.3 m

PHYSICAL

Length 85 mm

Width 85 mm

Height 115 mm

0.2 kg

wire springs

CUTOUT

Length 74 mm

Width 78 mm

Min. ceiling thickness 4 mm

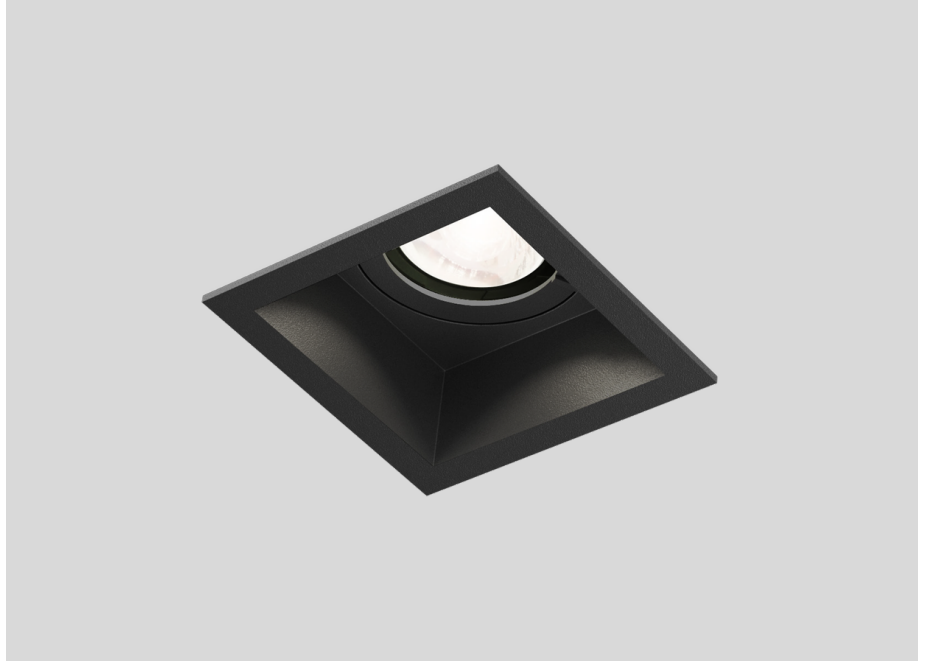
Max. ceiling thickness 30 mm

Recessed depth 115 mm

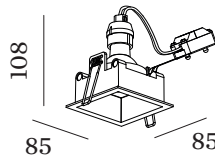
^a Color may deviate slightly due to production conditions.

^b PAR16 LAMP 2700K CRI90

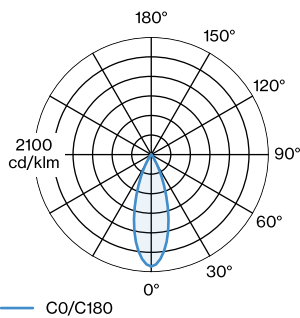
^c PAR16 LAMP 3000K CRI90



Squared ceiling recessed downlight made from die-cast aluminium; surface Black Matt; powder coated, matt texture; RAL 9011; installation without tools using wire springs; suitable for ceiling thickness of 4-30 mm; recessed depth 115 mm; lamp socket GU10; lamp type PAR16; max. 12W; 100 - 240 V; degree of protection from below IP44; from above IP20; PC2; lamp not included;



LIGHT DISTRIBUTION





WEVER & DUCRÉ
LIGHTING

PLANO

IP44 1.0 PAR16

118420B0

CONE DIAGRAM

flood 35°

h (m)	EO° (lx)	ø (m)
1	962	0.62
2	240	1.24
3	107	1.87
4	60	2.49
5	38	3.11

LAMPS

PAR16 LED Lamp

TYPE	COLOUR	Ø · H (MM)	ORDERCODE
2700K >90 CRI GU10	Black	ø50-60	9 0 1 2 2 8 B 3
3000K >90 CRI GU10	Black	ø50-60	9 0 1 2 2 8 B 5
2700K >90 CRI GU10	White	ø50-60	9 0 1 2 2 8 W 3
3000K >90 CRI GU10	White	ø50-60	9 0 1 2 2 8 W 5
2700K >80 CRI GU10	Silver	ø50-60	9 0 5 2 2 7 S 2
3000K >80 CRI GU10	Silver	ø50-60	9 0 5 2 2 7 S 4