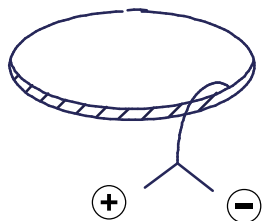


Smart Lotis 82 LED<900L 2,7KM GE

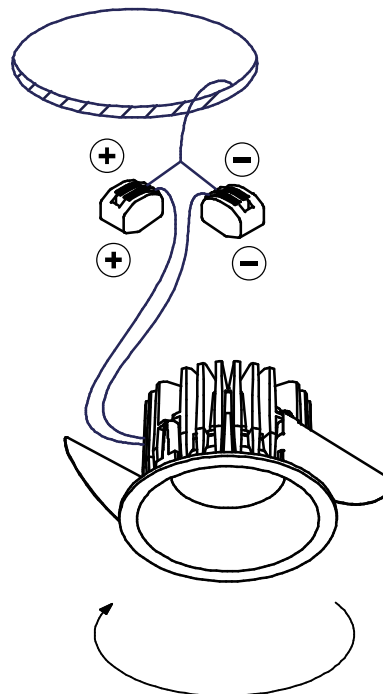
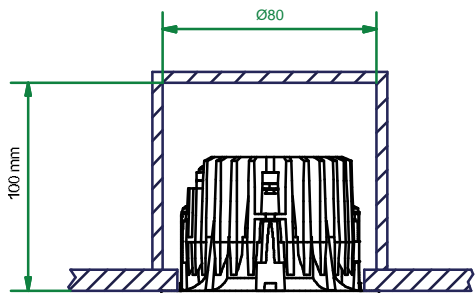
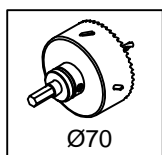
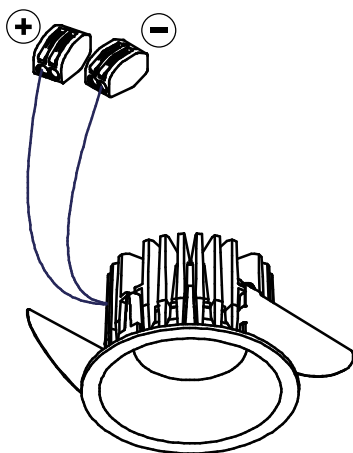
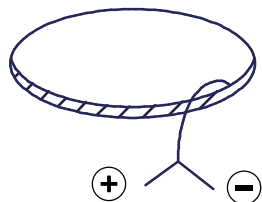
124410XX



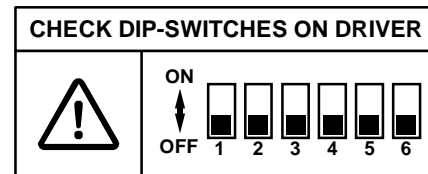
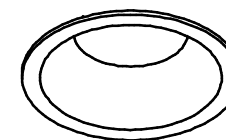
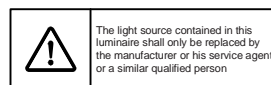
Drive Current (mA)	Forward Voltage		Power (W)
	min (Vf)	max (Vf)	
350	16,5	19,2	6,2
500	17,1	19,8	9,2
700	17,7	20,8	13,4

For serial connection, respect polarity!

⊕ RED	⊖ BLACK
-------	---------



install : Twist clockwise
uninstall : Twist counterclockwise



check dipswitch settings on driver
Push Dim max 5 drivers on 1 push button

Drivers:
see driver matrix - latest version on website
www.supermodular.com or check sales contact

