



SEP BV
Industriepark 1 4A - Zone B
2220 Heist-op-den-Berg
BELGIUM

INPUT: 220-240V~ 50/60Hz CLASS I ⊕

LAMP-HOUSE: LED-3W 265lm

MATERIAL: ALUMINIUM



INSTALLATION INSTRUCTION

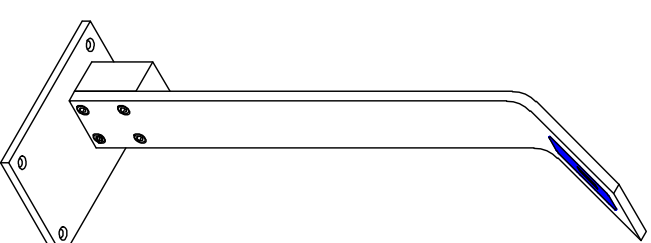
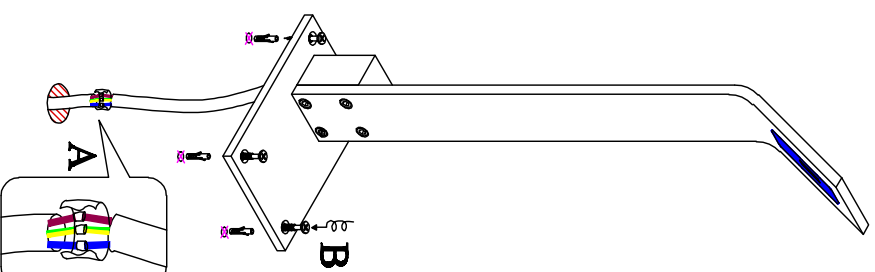
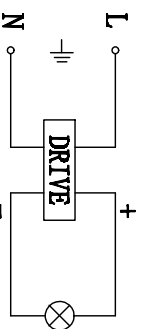
1. Before installing, make sure the power supply is switched off.
2. Follow the steps as the figure for installation or replacement of bulb Step.
 - A. make wires connection.
 - B. screw the fixture to the base plate.
3. After finishing every step, tighten the screws, have the fixture fixed, and then connect the power supply.

CLEANING INSTRUCTION

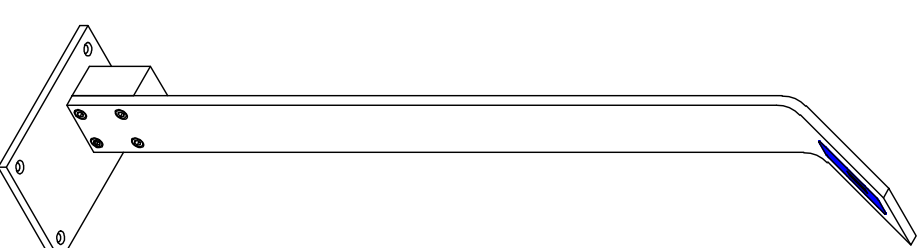
1. Before cleaning, ensure that the power supply is switched off.
2. Use only a soft cloth to clean the lamp, dampened with mild cleanser if needed for resistant dirt.
3. Warning: do not use alcohol or other solvents.

CAUTION:

In case of any doubt, please contact the qualified electrician.



12021-01-WW-3
12021-02-WW-3
12021-04-WW-3



12020-01-WW-3
12020-02-WW-3
12020-04-WW-3