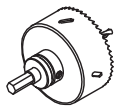
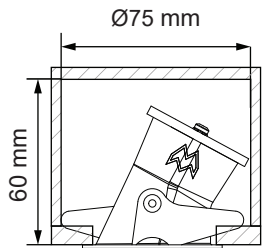


# Smart ASY LOTIS 48 IP LED GE

Lamptype:LED

128910XX\_128911XX\_128912XX

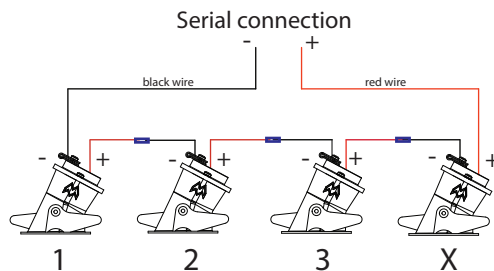
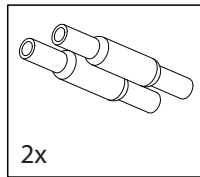
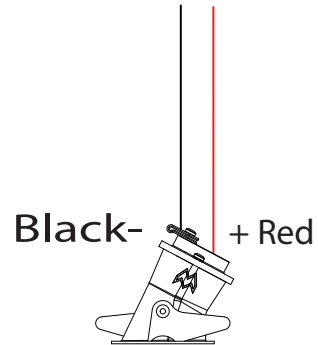
1



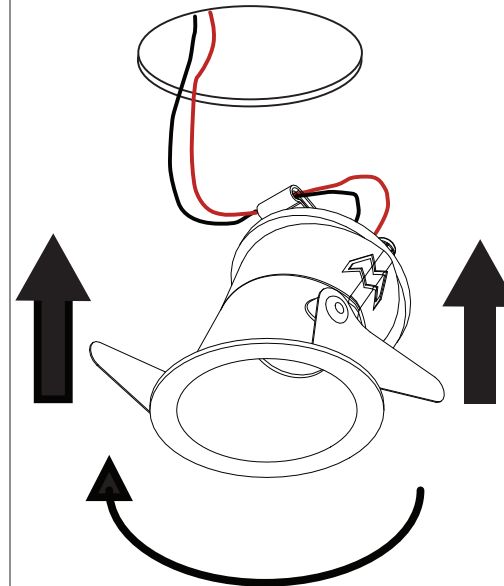
Ø44mm  
(gips/gypsum/gypse/gips/yeso/gesso/rinc)  
Ø46mm  
(hout/wood/bois/Holz/madera/legno/древесины)

2

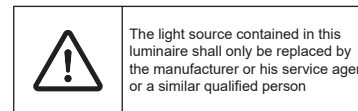
350mA - min 2,5Vf - max 3Vf - 0,95W  
500mA - min 2,5Vf - max 3Vf - 1,38W



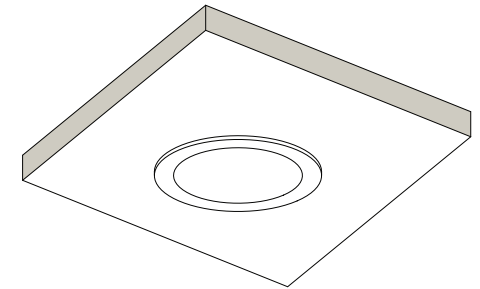
3



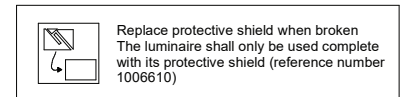
Twist counterclockwise to put through hole then twist clockwise to fixate



4



- Drivers: see driver matrix - latest version on website [www.supermodular.com](http://www.supermodular.com) or check sales contact



CAN BE USED WITH

-Gypkit: 12290730  
-Conbox: 10889530

