

# PIN

Design by Ichiro Iwasaki.

**VIBIA**  
LIGHT IS CREATION

## Reference

**1680.**

## Application

Wall Lamps

## Installation type

Surface

## Description

Wall lamp. Design by Ichiro Iwasaki. Wall light for reading, ideal for bedrooms. The diffuser can turn and rotate to bring the light to where it is needed. Available in white, black, cream and green matt finishes.

## Diffuser

Polycarbonate diffuser

## Materials

Head: Aluminium

Base: Zamak

Diffuser: Polycarbonate

Rods: Steel

## Finish



**1680-04** Matt black lacquer (NCS 9000N)



**1680-58** Matt cream lacquer (NCS S 2005-Y20R)

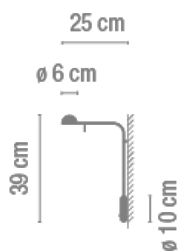


**1680-62** Matt green lacquer (NCS S 3010-G20Y)



**1680-93** Matt white lacquer (NCS S 0502-Y)

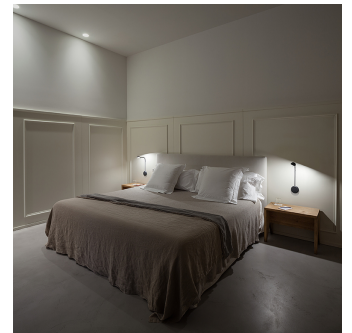
## Sketch



## Electrical characteristics

1 x LED 4,5W 350mA

Total 4.5 W



**Led** 2700K CRI >80 449 lm 109 lm/W

**Fixture:** 208 lm 0 lm/W

**Driver included:** CC - Constant Current 350 mA 100-240V 50/60Hz

**Electronic dimming** NO DIM

## Physical characteristics

1 Box / 0.15 x 0.36 x 0.47 m. / Vol. 0.0245 m<sup>3</sup> /

Gross weight 1.7 kg. / Net weight 1.0 kg.

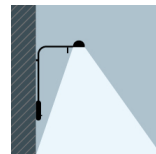
## Installation and assembly

Please, see the installation manual

## Light distribution

### Reading

Lamp having a light beam whose main function is to supply sufficient light for reading.



## Photometric data

Efficiency : 46.31%

Coordinate system : CG

Total flux : 449.94

Maximum value : 193.70

Light position : C=75.00 G=5.00

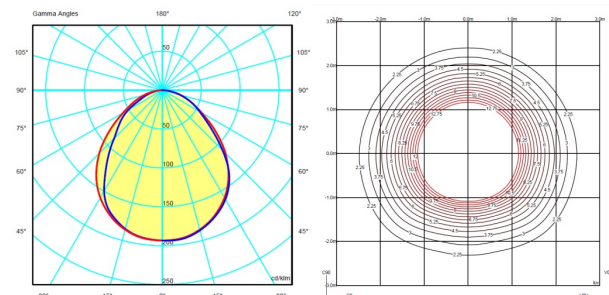
Symmetry on the planes : Symmetrical planes

270-90

Isolux : Floor

Light position :

X=0.00m Y=0.00m Z=1.80m



## Certificates



